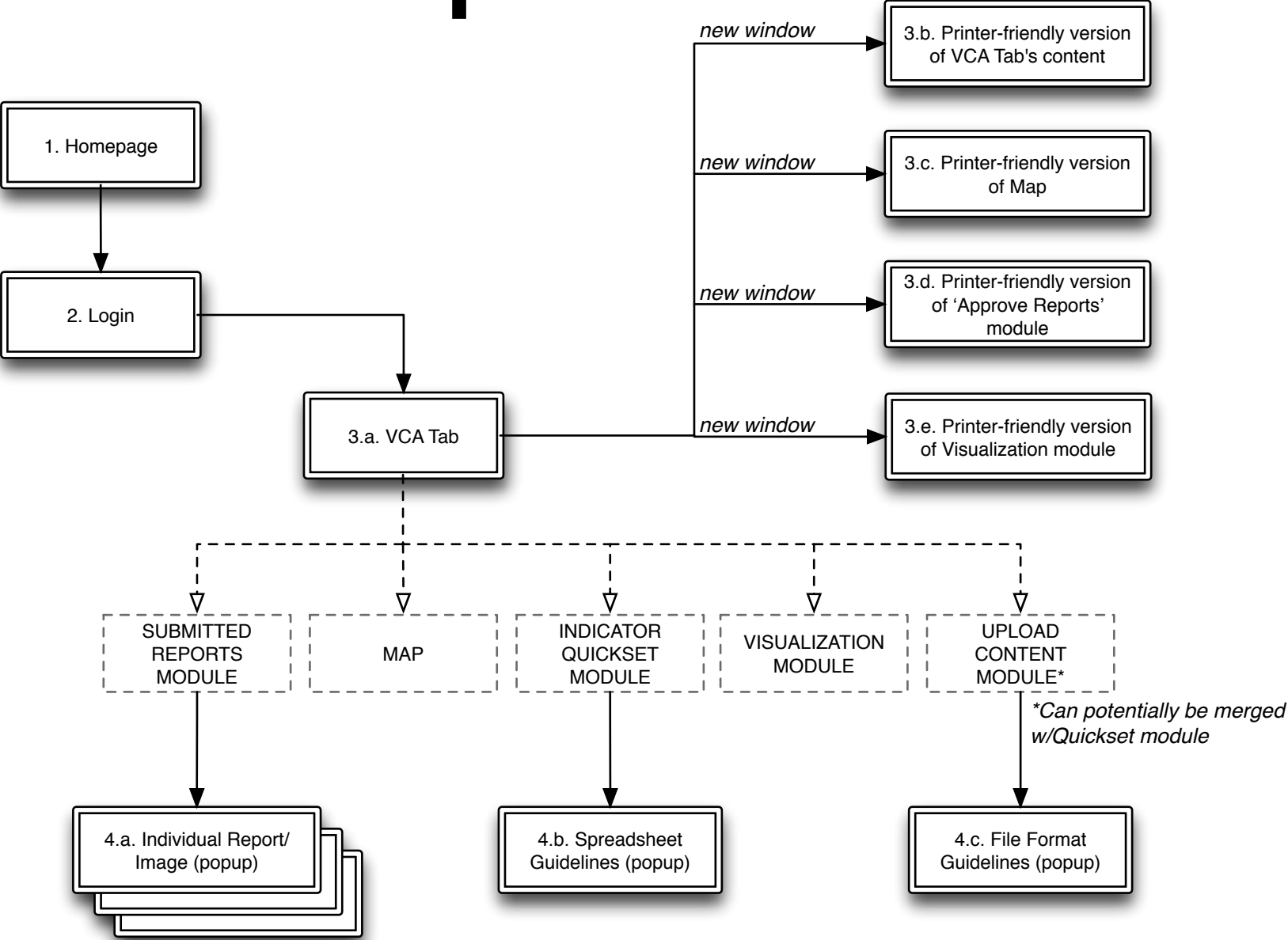


# Section Map



# 3.a. VCA

The screenshot shows the RMS Resource Management System Demo interface. At the top, there is a header with the RMS logo, navigation links (Administration, Logout, Change Password, English), and a tagline: "Managing material and human resources together to better prepare for future hazards and vulnerabilities." Below the header is a navigation bar with tabs for MAP, STAFF, VOLUNTEERS, MEMBERS, WAREHOUSES, ASSETS, ASSESSMENTS, and PROJECTS. The main content area is annotated with a list of modules and their features, connected to a vertical sidebar of module tabs by dashed arrows. A note indicates that the 'Indicator Quicksset' and 'Upload Content' modules could be merged. A 'Controls + Legend' box is shown at the bottom of the main content area, crossed out with an 'X'. The footer contains links for About Us, Contact, Help, and Privacy, and a logo for SAHANA EDEN.

admin@example.com  
Administration | Logout | Change Password | English

Managing material and human resources together to better prepare for future hazards and vulnerabilities.

MAP STAFF VOLUNTEERS MEMBERS WAREHOUSES ASSETS ASSESSMENTS PROJECTS

1024 px wide

Each module represented by a tabbed layer that moves out when clicked on  
(possibly the map is in the bg, with tabs moving in front of it?)

- **Map**
  - Interactive map
  - Map/indicator controls
- **Visualization Module**
  - Overview section
  - Check section
  - Analysis section
- **Indicator Quicksset Module**
  - Form for rating indicators in specific locations
  - Upload option for Excel spreadsheets
- **Upload Content Module**
  - Upload form for images and reports
- **Submitted Reports Module ("super staff" only)**
  - Queue of reports and uploaded content for approval
  - Toggle to reviewed reports (within a date range)

\*These two could be merged

Map  
Visualization  
Indicator Quicksset  
Upload Content  
Review Reports

National  
Province  
District  
Sub-District

Controls + Legend

About Us | Contact | Help | Privacy

Powered by SAHANA EDEN



# RMS RESOURCE MANAGEMENT SYSTEM Demo

admin@example.com

[Administration](#) | [Logout](#) | [Change Password](#) | [English](#) ▾

Managing material and human resources together to better prepare for future hazards and vulnerabilities.

MAP

STAFF

VOLUNTEERS

MEMBERS

WAREHOUSES

ASSETS

ASSESSMENTS

PROJECTS

MAP

VISUALIZATION MODULE

## REVIEW REPORTS MODULE

View Reports in Map

## INDICATOR QUICKSET + UPLOAD CONTENT MODULE

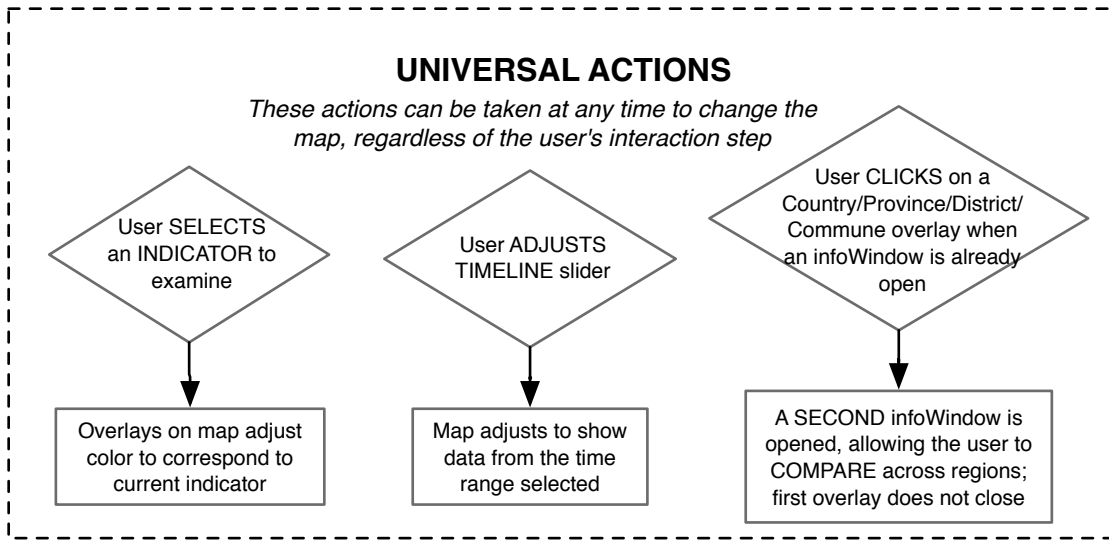
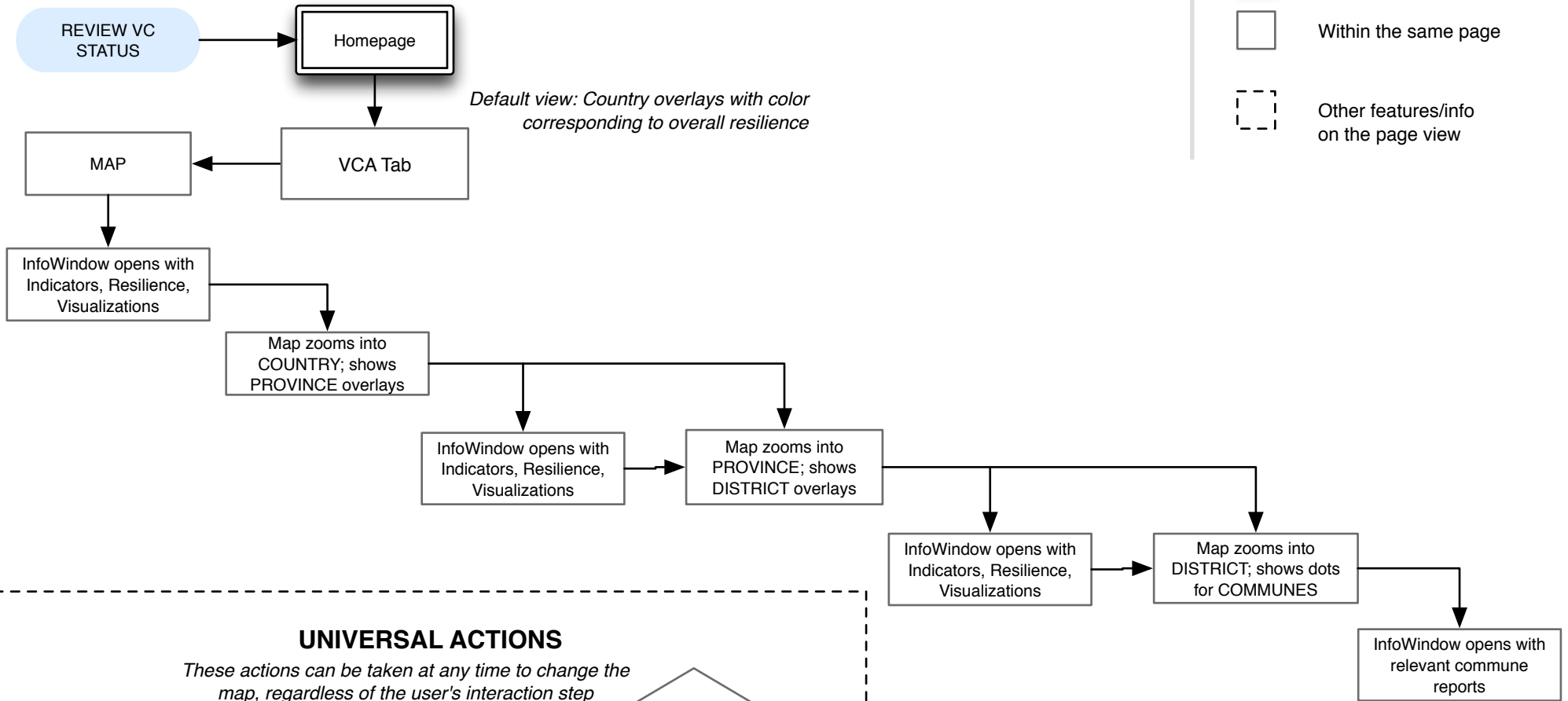
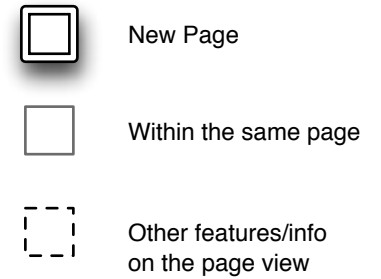
Toggle between Indicator Quickset  
and Content Upload modules

Form to set indicators

Option to upload excel spreadsheet

Link to Spreadsheet guidelines (popup)

# USERS: ALL (MAP)



# VCA Tab

MAP

VISUALIZATION  
MODULE

APPROVE REPORTS  
MODULE

INDICATOR QUICKSET  
MODULE

UPLOAD CONTENT  
MODULE

*\*Can potentially be merged w/  
Quickset module*

# USER: FIELD PERSON



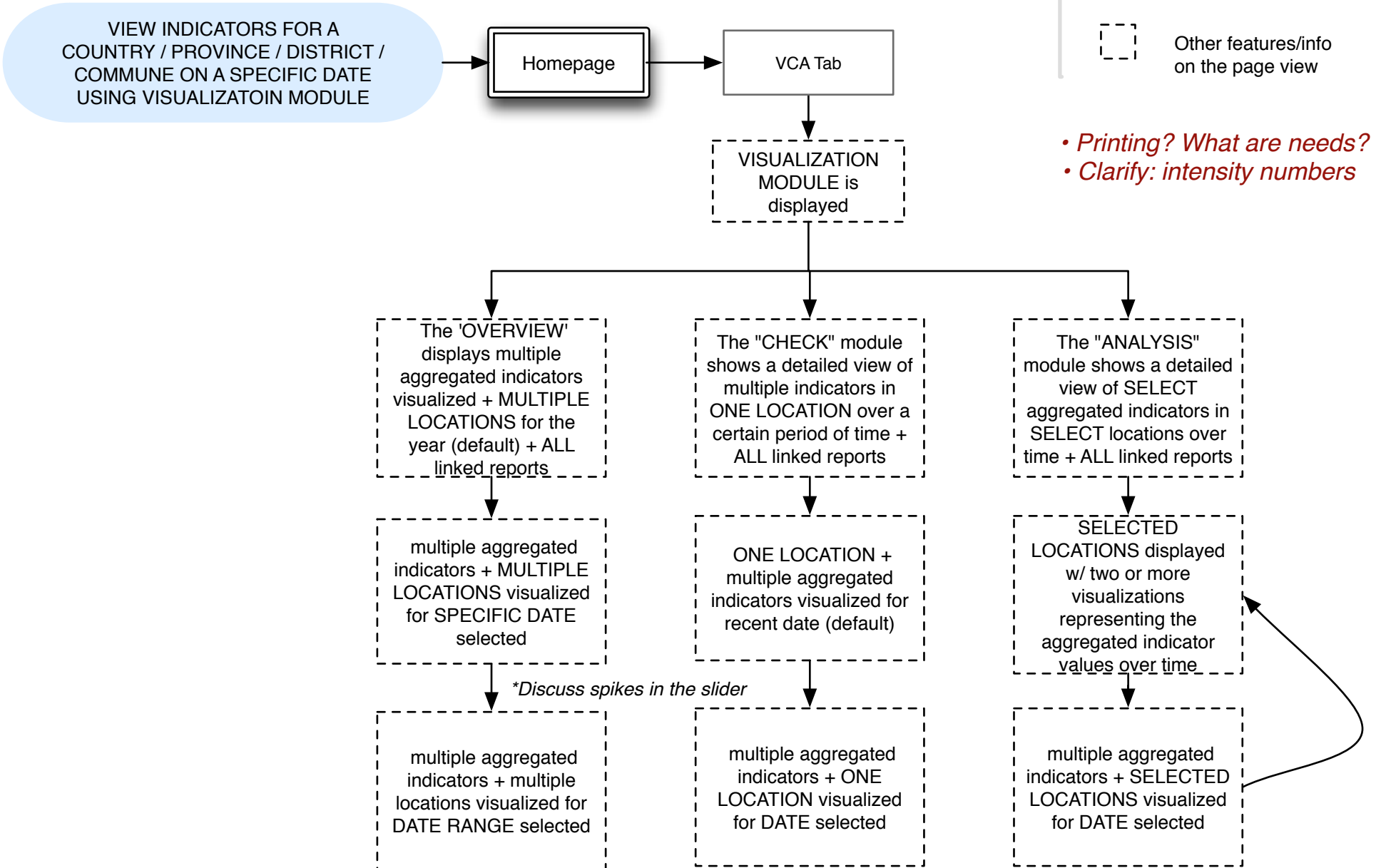
New Page



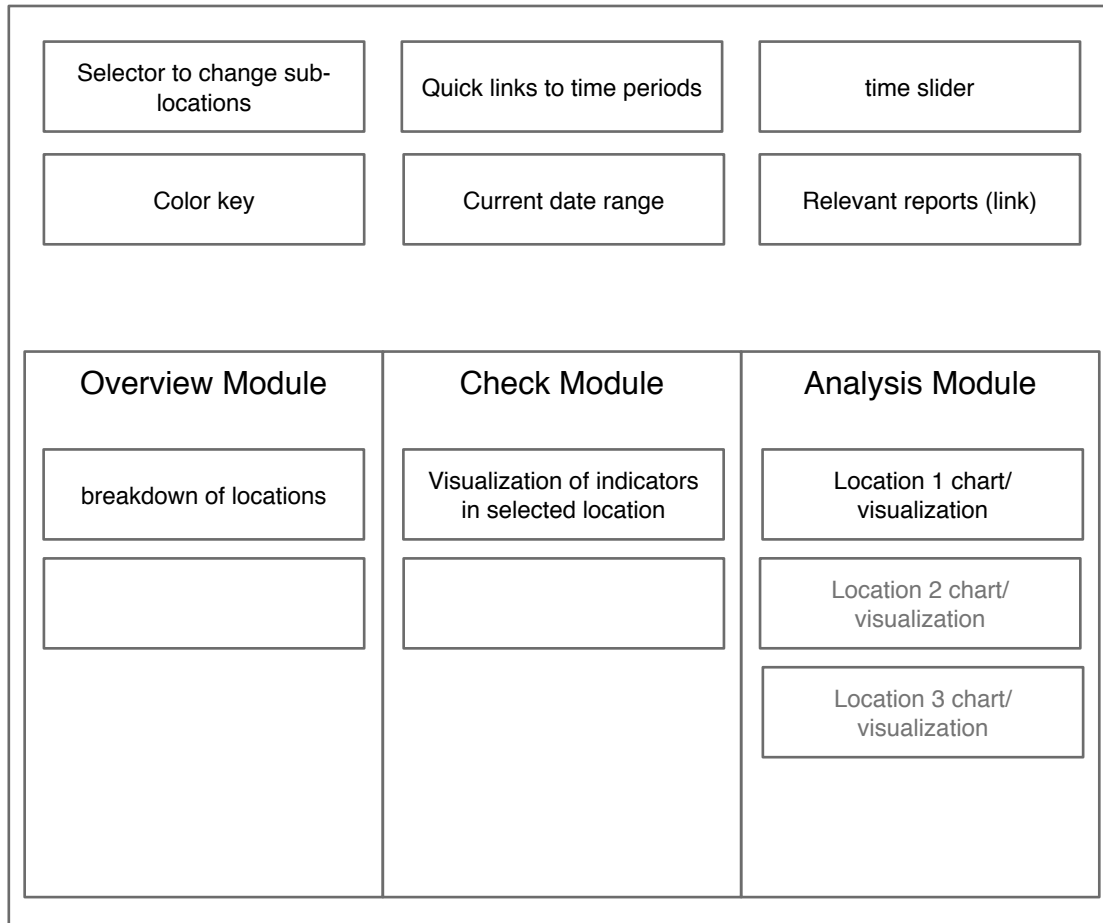
Within the same page



Other features/info on the page view

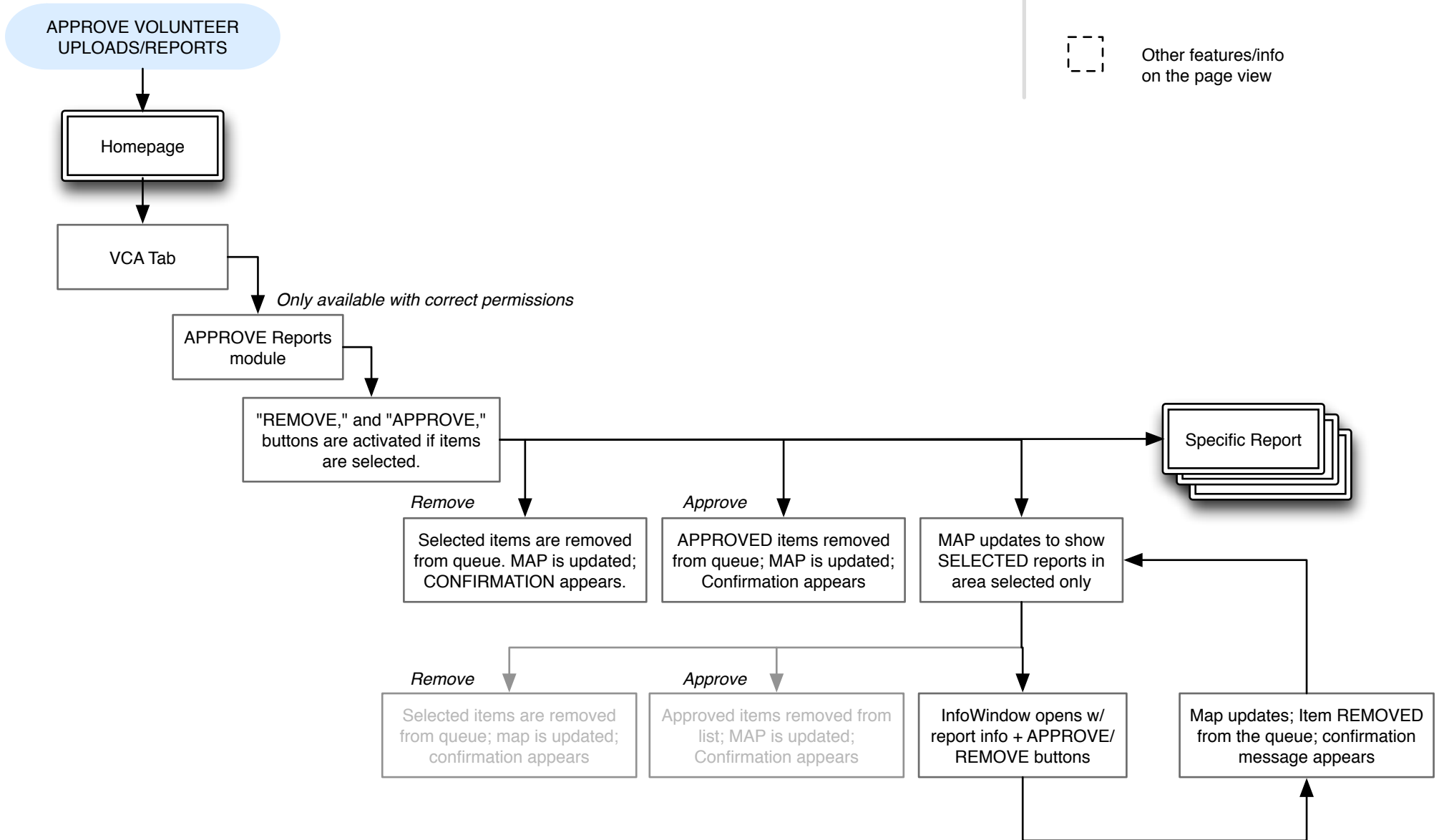
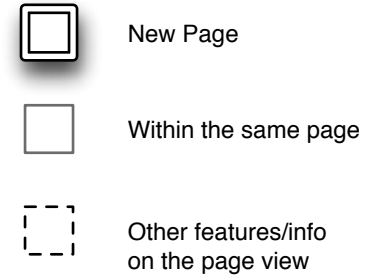


# Visualization Module

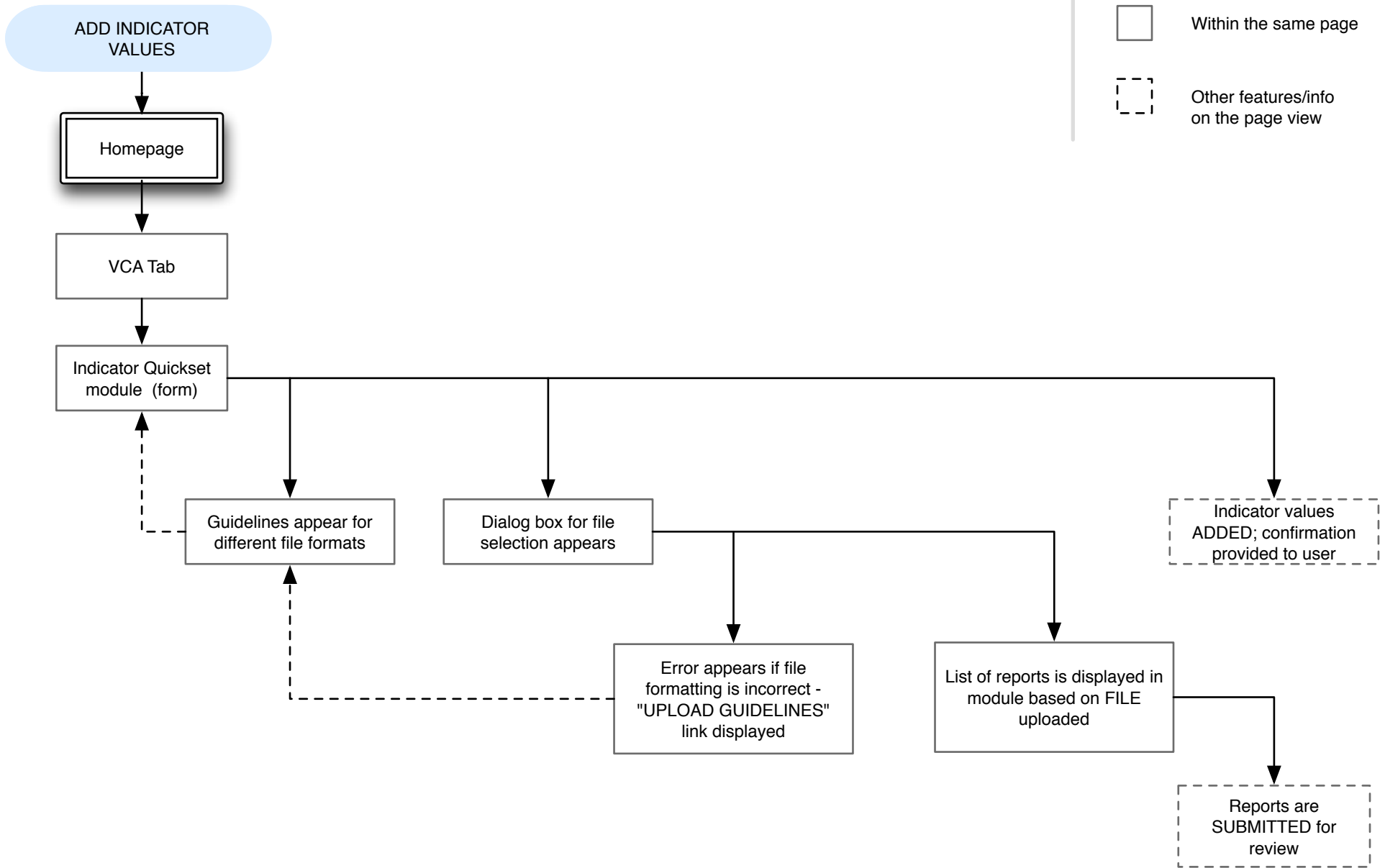




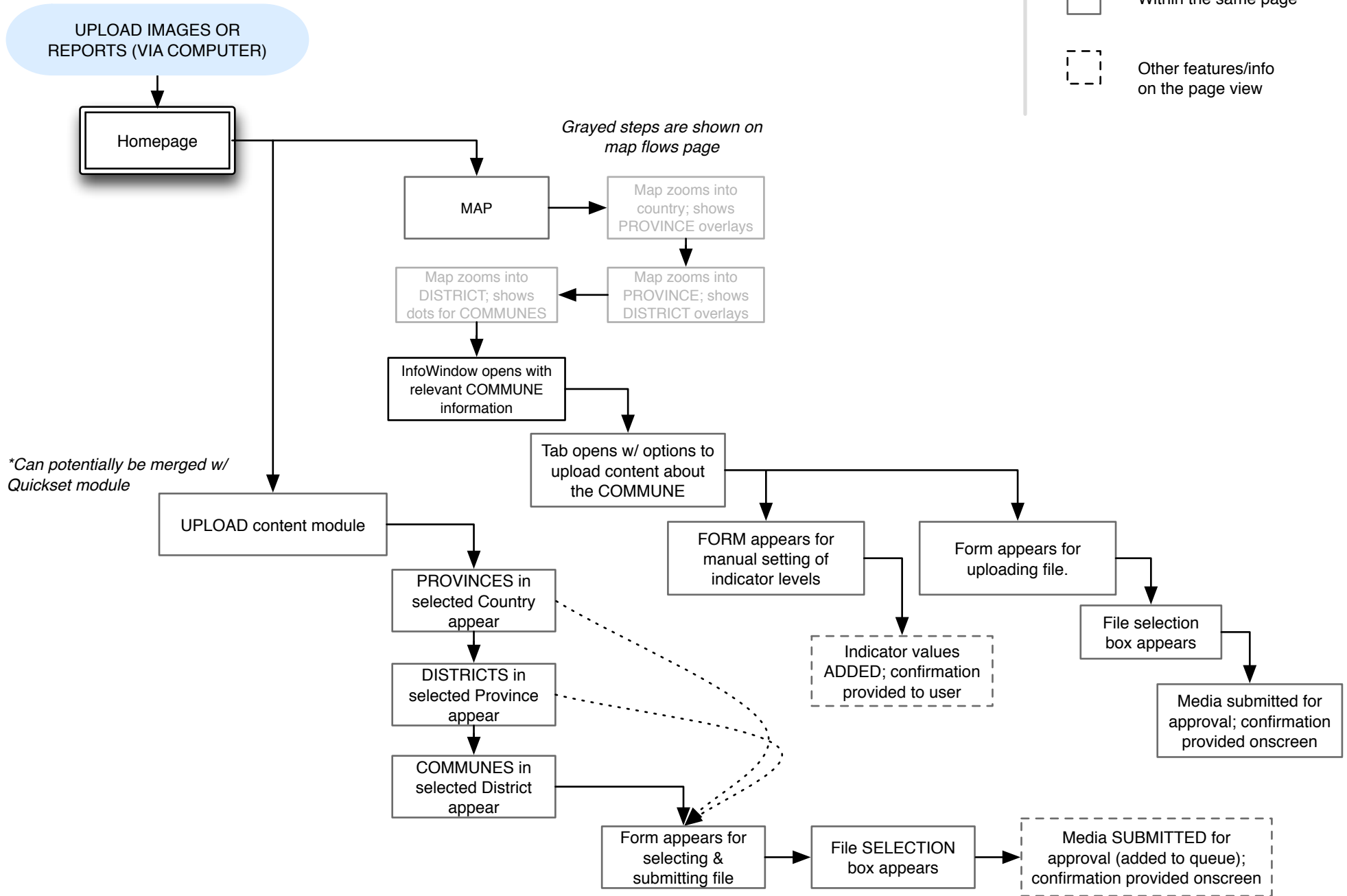
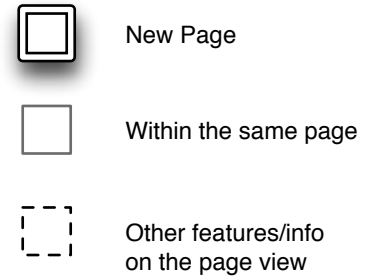
# USER: STAFF



# USER: STAFF



# USER: STAFF



# Approve Reports Module

Remove button	List (queue) of reports for approval
Approve button	Select boxes next to each report
"Select all" option	

## 3.a. VCA

- **Map**
  - Interactive map
  - Map/indicator controls
- **Visualization Module**
  - Overview section
  - Check section
  - Analysis section
- **Indicator Quickset Module**
  - Form for rating indicators in specific locations
  - Upload option for Excel spreadsheets
- **Upload Content Module**
  - Upload form for images and reports
- **Submitted Reports Module ("super staff" only)**
  - Queue of reports and uploaded content for approval
  - Toggle to reviewed reports (within a date range)

## 3.b–3.e. Printer-friendly

(Popup window, formatted for printing)

- **Map**
  - Interactive map
  - Map/indicator controls
- **Visualization Module**
  - Overview Module
  - Check Module
  - Analysis Module
- **Submitted Reports Module ("super staff" only)**
  - Queue of reports and uploaded content for approval
  - Toggle to reviewed reports (within a date range)

## 4.a. Individual Report/Image

(Popup window)

(if .pdf or image)

- Preview of document/image

(if not previewable, e.g. an MSWord doc)

- Download file

## 4.b. Spreadsheet Guidelines

(Popup window)

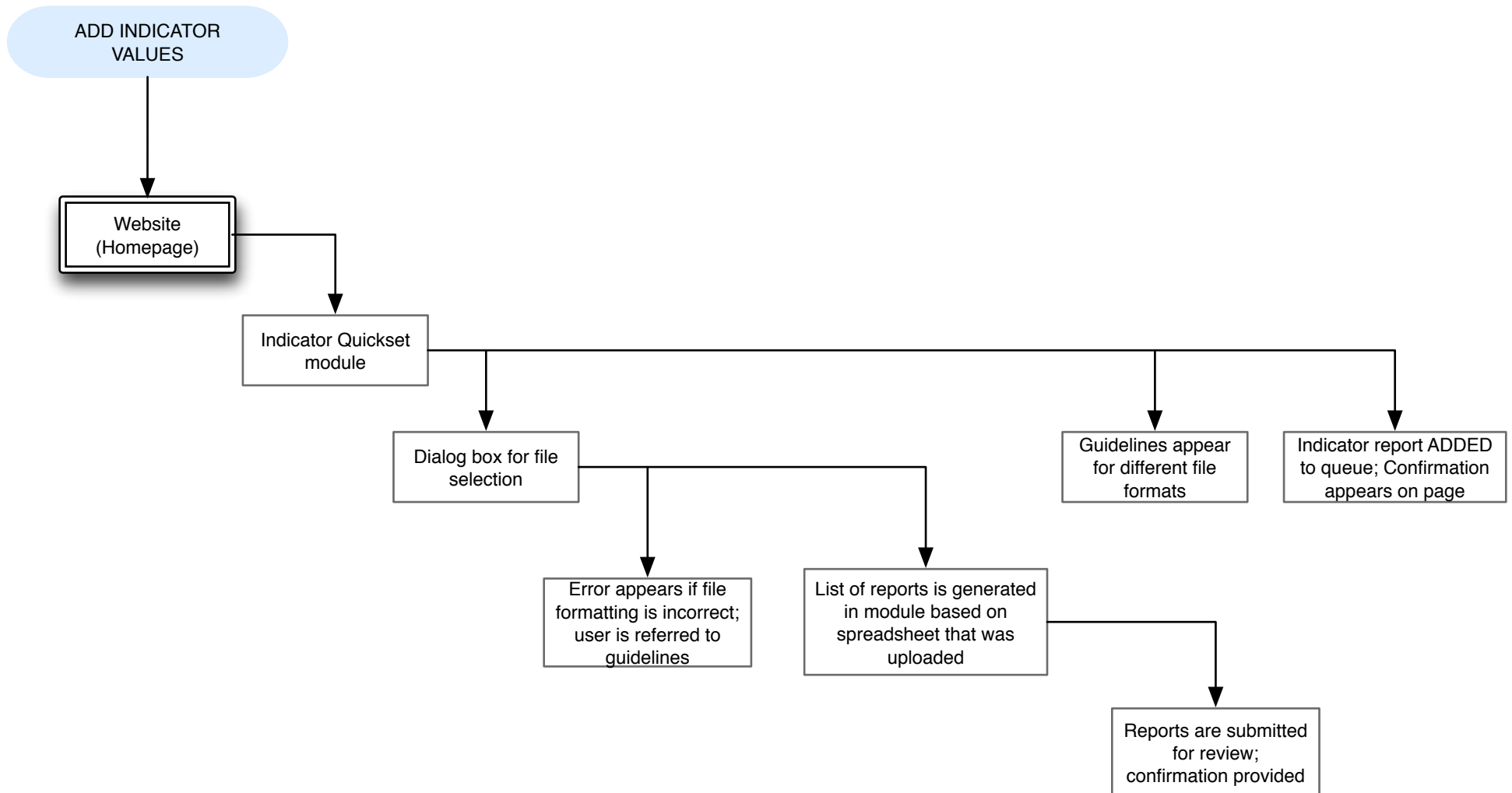
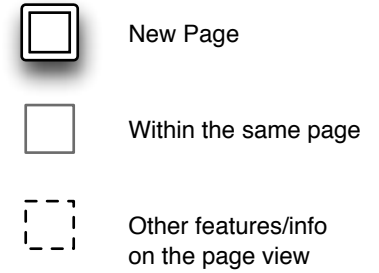
Listing of guidelines for formatting Excel spreadsheets when uploading spreadsheets of reports

## 4.c. File Format Guidelines

(Popup window)

Guidelines for acceptable file formats for uploading images and VCA reports.

# USER: VOLUNTEER



# USER: VOLUNTEER

